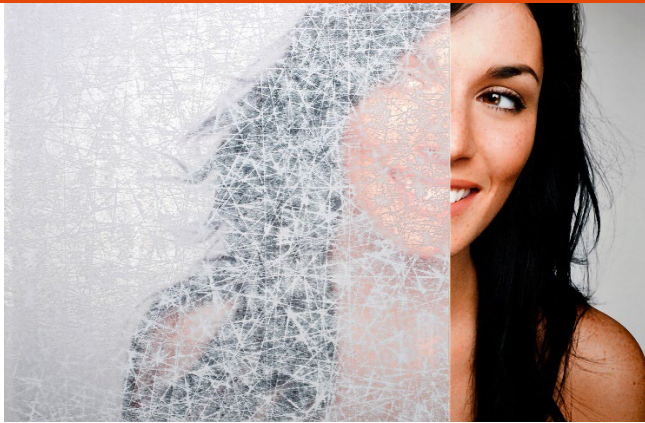


SOLYX® Glass Finishes SX-8280 Clear Washi



Product Description

SOLYX® SX-8280 Clear Washi is a semi-translucent, rice paper patterned film. Made of durable polyester film, it is supplied with a silicone coated liner which protects the clear, pressure-sensitive adhesive. It is recommended for application to interior and exterior glass (inside surface) and is ideal for privacy, decorative, or architectural applications.

Flammability Rating

This product meets ASTM E84 and is classified as Class A as defined in NFPA 101, Life Safety Code®.

LEED Credit EQ 4.1 Low Emitting Materials, Adhesives & Sealants

This product has zero VOC content according to 40 CFR 59, Subpart D (EPA method 24).

Product Details

SOLYX® SX-8280 Clear Washi is a semi-translucent, rice paper patterned film that is ideal for obscuring direct visibility while allowing good light transmission.

Specifications

Product Code	SX-8280
Product Family	Organic
Film Type	Polyester
Adhesive Type	Pressure-Sensitive
Usage	Interior
Available Width(s)	60"
Full Roll Length	100 linear feet (30.5m)
Thickness	2 mil
Visible Light Transmission	24%
UV Transmission	6%
IR Transmission	61%

Installation and Warranty

Installation

Installation should be in accordance with the manufacturer's installation instructions. This film is applied using the same tools and techniques used for installing window tinting films.

Warranty

This SOLYX® product will be free from defects in material and manufacture for a period of five (5) years from the date of installation. See warranty information for specific details.

Product Distribution and Contact Information

Distribution

SOLYX® Decorative Films are available through authorized Installing Dealers, Distributors, or directly from Decorative Films, LLC.

Samples submitted upon request.

Contact Information

Decorative Films, LLC
1-888-657-5224
www.decorativefilm.com

Product Construction

Face Film

2 mil Polyester

Adhesive

Clear, Pressure-Sensitive

Release Liner

Silicone Coated Polyester

Product Description